

User Guide for Wallbox Charging Stations

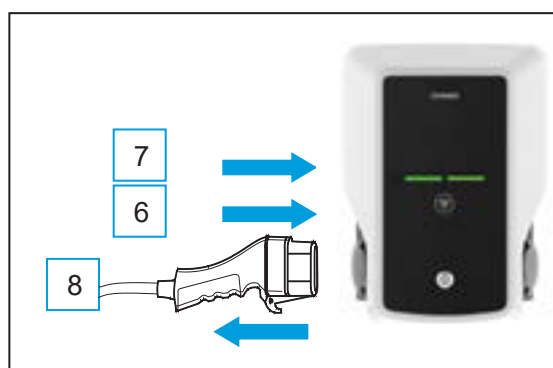
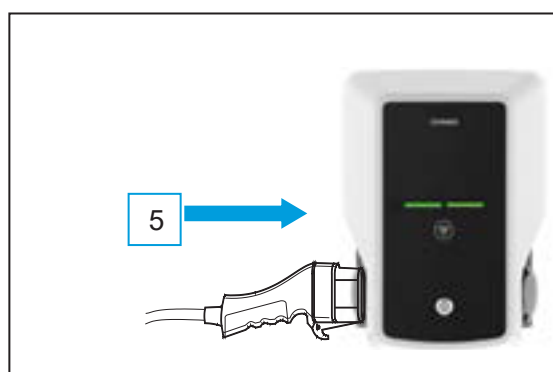
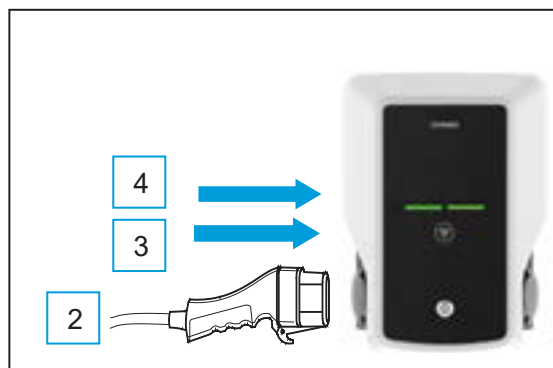
How to charge with an RFID tag?

Start charging:

1. Connect the charging cable to your vehicle.
2. Connect the charging cable to the charging station.
3. Show the RFID tag to the RFID reader. (Not necessary if charging is free.)
4. The LED indicator light flashes green and verifies that you are allowed to charge.
5. The LED indicator light turns blue, charging is ongoing.

Stop charging:

6. Show the RFID tag to the RFID reader. (Not necessary if charging is free.)
7. The LED indicator light turns green.
8. Disconnect the charging cable from the charging station.
9. Disconnect the charging cable from your vehicle.



LED indicator lights

Charger status	Indicator light color	Indicator light operation	
		Operation	Visual representation
The charging station is free and ready to use	Green	Stable	
User identification	Green	Flashing	
User authorization is rejected / Charging is not allowed	Red	Flashing	
User authorization is accepted / Charging is allowed	Green	Flashing	
Vehicle is not connected	Green	Waving	
Vehicle is connected, charging starts	Blue	Waving	
Charging is ongoing	Blue	Stable	
Error state	Red	Stable	